

# HOSPITALITY

2026



# Content

**03** Welcome  
A brief introduction to who we are and what we do.

**04** About Us  
Our story, our values, and how we support your guest experience.

**05** New Arrivals  
Fresh launches and the latest additions to our collection.

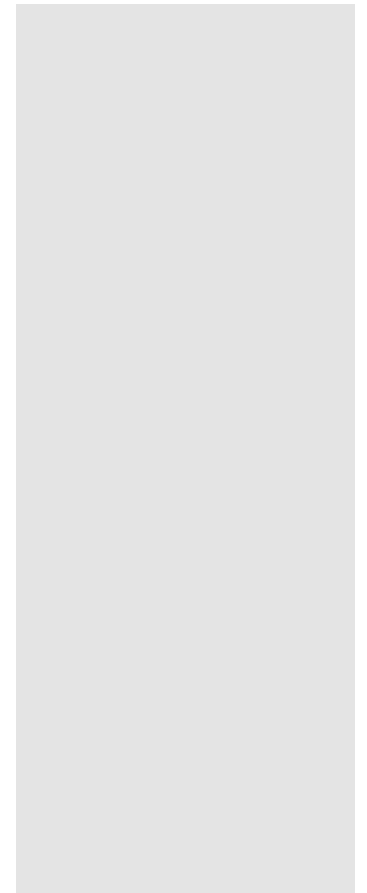
**07** Bedroom  
Our curated range of in-room essentials, from irons to bins and beyond.

**34** Bathroom  
Thoughtfully designed bathroom accessories to elevate every stay.

**43** Swithland Spa  
A calming collection inspired by spa-led comfort and wellbeing.

**47** Bespoke  
Tailored designs and custom finishes crafted around your vision.

**48** Featured Brands  
Industry-leading partners bringing trusted quality to your hotel.



# Welcome to Decotel



As we look to the future,

Our focus remains on progress—both for our business and for the partnerships that define hospitality. The industry continues to evolve, and we're committed to moving forward with innovation, sustainability, and collaboration at the heart of everything we do.

Over the past year, we've considerably expanded our offering, introducing new collections and enhancing existing ranges to give our clients more choice than ever before. From the launch of **Swithland Spa**, inspired by elegance and comfort, to a growing portfolio of sustainable solutions, these developments reflect our shared ambition to create spaces that feel exceptional.

Thank you for being part of this journey. Together, we can shape a future where hospitality continues to inspire and delight.

*Paul Siouville*

Managing Director

Decotel Group

# About

For over 75 years, Decotel has partnered with hotels and hospitality businesses across the UK and EMEA, supplying Operating Supplies & Equipment (OS&E) that make a meaningful difference. From boutique properties to global hotel groups, we work closely with operators, designers, and procurement teams to understand their needs and deliver products that combine style, durability, and practicality.

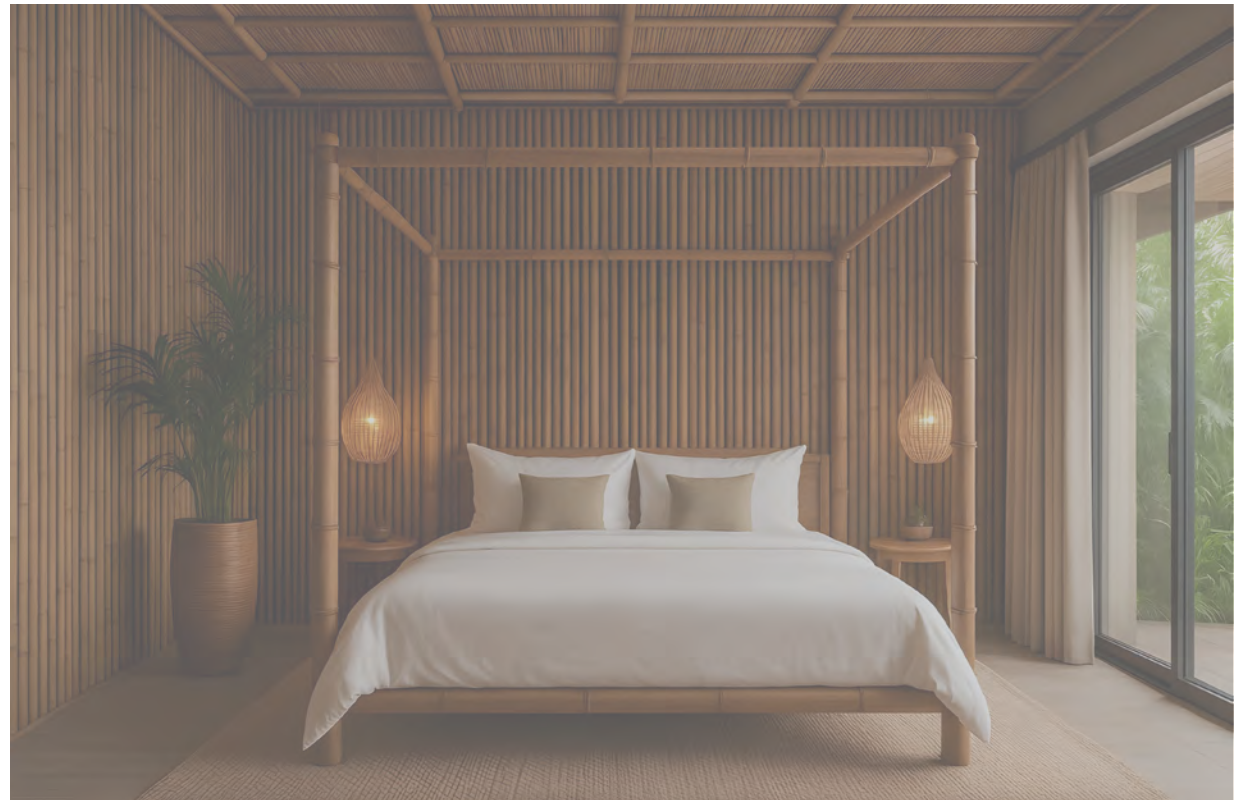
With offices and warehouse in **Loughborough** and a distribution hub in **Valencia**, we're positioned to support projects of every size — always with a focus on reliability, service, and consistency. At Decotel, we believe success comes from collaboration, and we're here to help you create spaces that guests remember.

## Sustainability

At Decotel, sustainability is part of everything we do. Our goal is to help hospitality businesses make greener choices without compromising quality or style.

Our Commitment:

- Eco-Friendly Product Ranges – FSC-certified wooden accessories, bamboo collections, and leatherette items designed for durability and elegance.
- Recycled & Recyclable Materials – From packaging to product design, we prioritise materials that reduce waste and support circular practices.
- Responsible Partnerships – We work with suppliers who share our values, ensuring fair wages, safe working conditions, and ethical standards.
- Shared Goals – Sustainability is a journey we take together, helping hotels meet environmental targets while enhancing guest experiences.



# New Arrivals

Immerse yourself in the quiet refinement of our latest arrivals, where thoughtful design meets uncompromising quality. This season, our collection expands with beautifully crafted kettles, impeccably contoured bins, sophisticated hospitality trays, and elevated garment care essentials—each piece created to enhance the guest experience with an effortless sense of luxury. These new additions reflect our continued commitment to timeless style, superior durability, and the considered details that define the Decotel touch.



## Sofia High-Speed Hairdryer

Meet Sofia, our high-speed hairdryer crafted for effortless luxury. With its sleek graphite finish, soft LED detailing, and powerful yet smooth airflow, it delivers a premium styling experience guests instantly recognise and appreciate.

## Talia Hotel Kettles

A refined balance of style and practicality, the new Talia Kettles bring contemporary elegance to the guestroom. Available in Brushed Steel or Titanium Black, their compact silhouettes and cool-touch design offer a beautifully streamlined refreshment experience.



## Folding Tabletop Ironing Board

Thoughtfully designed for discreet convenience, our Folding Tabletop Ironing Board offers a smart, space-saving solution with a stable padded surface and easy fold-flat storage—ideal for refined, guest-ready rooms.

# Bedroom

Our bedroom ranges combine everyday essentials — including kettles, garment care, safes, minibars, and accessories — with practical design for hospitality environments. Each product is chosen for durability, consistency, and easy integration across a variety of room styles.



## Garment Care (Irons, Boards, Steamers)

Our garment-care collection is crafted to support the polished, elevated standards of modern hospitality. From refined irons to compact boards and efficient steamers, each piece combines practical functionality with the quiet sophistication that defines the Decotel experience—ensuring guests feel perfectly prepared, whatever the occasion.



### Eclipse Steam Iron

- 2200W power, 220-240V, 50Hz
- 305 × 125 × 160 mm
- 1.33 kg easy to handle
- 350ml water tank
- Ceramic soleplate & auto-off

CA00194E



### IC6 Steam Iron

- 1600W power, 220-240V, 50Hz
- 250 × 110 × 135 mm
- 1.05 kg easy to handle
- 210ml water tank
- Ceramic soleplate & auto-off

CA00154E



### IC5 Dry Iron

- 1200W power, 220-240V, 50Hz
- 255 × 110 × 125 mm
- 0.93 kg lightweight design
- 3m 360° swivel lead for easy use
- Non-stick soleplate & auto-off

CA00151E

## Garment Care (Irons, Boards, Steamers)



### Eclipse Steam Ironing Centre

Board:  
920×305 mm ironing area, 1350 mm folded with hook, height to 825 mm, metalised foam/felt cover.  
Decotel Eclipse Steam Iron:  
2200 W, 1.33 kg, variable temp/steam, ceramic non-stick soleplate, anti-calc/anti-drip, auto-off (30 s/8 min), self-clean, power indicator.

CA01116E



### Steam Ironing Centre

Board:  
920×305 mm ironing area, 1350 mm folded with hook, height to 825 mm, metalised foam/felt cover.  
Decotel Steam Iron:  
1600 W, 1.05 kg, variable temp and steam, water jet, 210 ml tank, ceramic non-stick soleplate, auto-off (30 s/8 min), 3 m 360° lead.

CA00120E



### Dry Ironing Centre

Board:  
920×305 mm ironing area, 1350 mm folded with hook, height to 825 mm, metalised foam/felt cover.  
Decotel Dry Iron:  
1200 W, 0.93 kg, Variable temp, non-stick soleplate, auto-off (30 s/8 min), 3 m 360° lead.

CA00121E



### Ironing Board

Ironing Area: 920 mm × 305 mm  
Maximum Folded Size: 1300 mm  
Height Adjustment: Up to 825 mm  
Cover: Metalised cover with 2 mm foam / 3 mm felt underlay

\*Can be supplied without rest

CA00165E

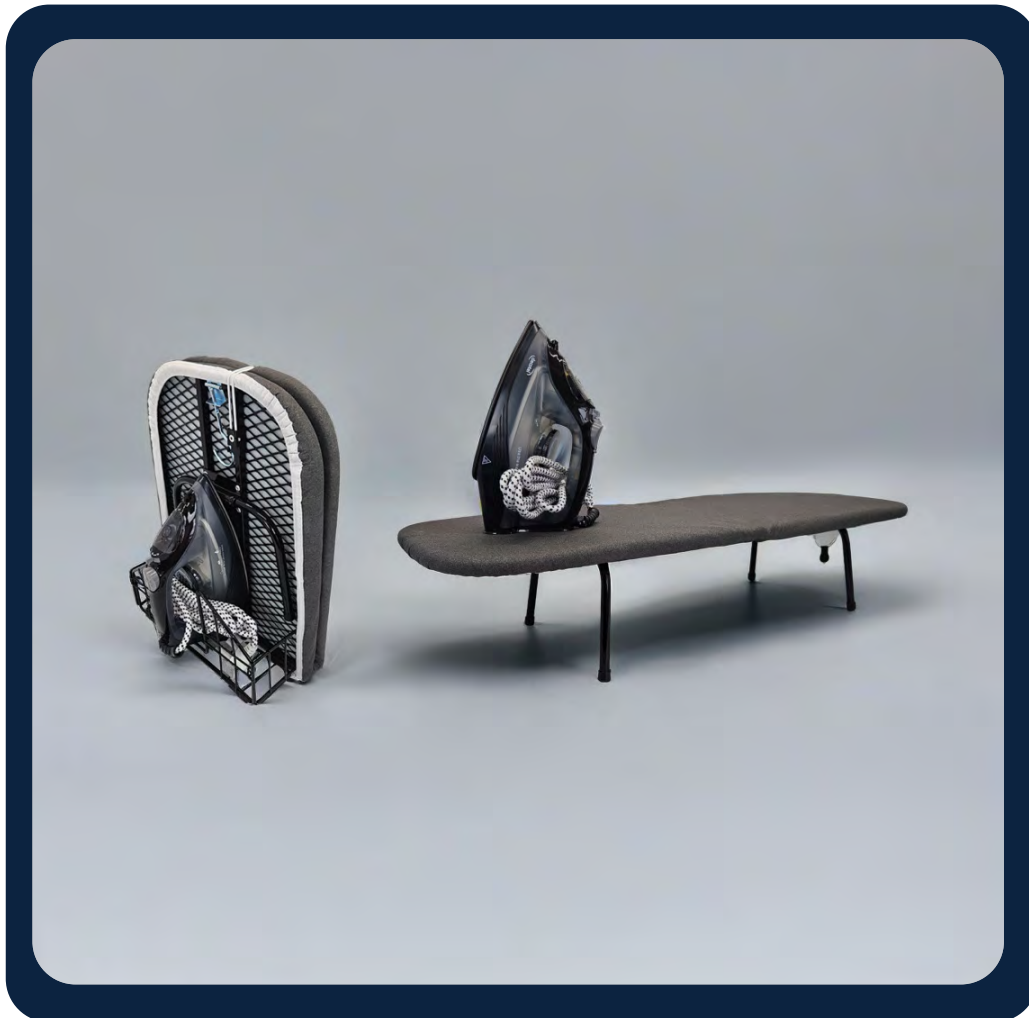


### Ironing Board Cover

Cover: Dark grey metallised with drawstrings  
Padding: 2mm foam + 3mm felt  
Fits boards up to 920 × 305 mm

CA00971E

## Garment Care (Irons, Boards, Steamers)



### Folding Tabletop Ironing Board

Compact and discreet, this folding ironing board is ideal for hotel guest rooms. Its fold-flat design with integrated hanging hook allows easy storage, while the padded surface with metallic cotton cover ensures a smooth ironing experience. Lightweight yet durable, it also features a built-in iron basket for convenient, organised use.

Open Dimensions: 813 × 305 × 170 mm  
 Folded Dimensions: 400 × 310 × 55 mm  
 Weight: 2.0 kg  
 Ironing Surface: Mesh board with 5 mm felt padding  
 Cover: Metallic cotton  
 Frame Finish: Powder-coated  
 Features: Fold-flat design, integrated iron basket, built-in hanging hook

\*Iron not supplied

CA00992E



### Ironing Board

Store (IC5 / IC6)

280 x 160 x 70 mm

Finish: Metal with gripped iron holder

CA00175E



### Ironing Board Hook

190 x 100 x 50 mm

Finish: Metal with PVC coated hanger

CA00118E

## Garment Care (Irons, Boards, Steamers)

### Handheld Hotel Steamer

A compact, guest-friendly steamer designed for quick, reliable garment refreshes in hotel rooms.

- 1500W power with 30-second heat-up
- Compact & lightweight (160 × 118 × 240 mm)
- Leak-proof for horizontal or vertical steaming
- Dual steam levels with ceramic-coated soleplate
- 300 ml tank with auto shut-off safety (45 s)

CA00198E



### Steamer Bag

300 x 400 mm  
Material: Cotton Fabric

CB00223E

## Hairdryers

Our hairdryer collection is crafted to bring powerful, efficient drying and refined design to every guestroom. With sleek modern styling, intuitive controls, and dependable hotel-grade engineering, each model delivers a smooth, comfortable user experience that enhances both practicality and presentation.



### Sofia

#### High-Speed Hairdryer

A high-speed hotel hairdryer designed for fast, polished drying with a premium, modern look.

- 1600W, 110,000 rpm high-speed motor
- Ionic technology for smooth, frizz-free results
- 2 speeds & 4 temperatures for controlled styling
- Magnetic concentrator with reverse-air self-cleaning
- 3.0 m cable, auto shut-off, graphite finish

CB00035E

## Hairdryers



### Azure Compact Hairdryer

Power: 1600–2000 W DC motor, 220–240 V  
 Dimensions: 131 × 85 × 286 mm  
 Settings: 3 speeds, 3 temperatures  
 Design: Soft-touch body, LED light  
 Features: Ionic function, ON/OFF switch  
 Accessories: Concentrator nozzle  
 Cable: 3.0 m cord with hanging loop

CB00030E



### Ionic Hotel Hairdryer

Power: 1800–2200 W, 220–240 V, 50 Hz  
 Settings: 2 speeds, 3 heats  
 Features: Ionic function, hotel push-button on/off, overheat protection  
 Design: Removable air intake & filter, hanging loop  
 Accessories: Styling concentrator  
 Cable: 2.5 m power cable

CB00022E



### Leveche Folding Hairdryer

Power: 1800–2200 W, 220–240 V, 50/60 Hz  
 Design: Black/silver finish with folding handle  
 Settings: 2 speed settings  
 Safety: Hotel safety on/off, overheat protection  
 Features: Removable intake & filter, hanging loop  
 Accessories: Styling concentrator  
 Cable: 2.5 m power

CB00025E



### Hairdryer Bag

Dimensions: 300 × 400 mm  
 Material: Cotton  
 Use: Suitable for all Decotel hairdryers

CB00222E

Simple moments,  
beautifully presented.



## Tea and Coffee Making Facilities

Our tea and coffee-making collection is designed to bring a sense of quiet refinement to the guestroom, combining elegant aesthetics with the practical features hotels rely on. From premium kettles and contemporary coffee machines to coordinated welcome trays and neatly organised coffee boxes, each piece works together to create a polished, inviting refreshment station. Blending durability with modern design, these solutions help deliver a seamless guest experience—one that feels considered, welcoming, and effortlessly professional.



### Milano Coffee Machine

Power: 1400 W, **19-bar pump**  
 Design: Compact black/chrome, 302 × 118 × 230 mm  
 Capsules: Nespresso-size compatible  
 Operation: One-touch with auto-stop  
 Convenience: 700 ml tank, removable drip tray  
 Efficiency: 9-min auto shut-off

CB00653E



### Talía 1.0 - brushed steel

Capacity: 1.0 L  
 Power: 750 W, 220–240 V~, 50/60 Hz  
 Dimensions: 185 × 185 mm  
 Safety: UK STRIX, boil-dry, auto off  
 Design: Cool-touch, stainless interior  
 Use: Push-lid, 360° base, concealed element

CB00262E



### Talía 1.0 - titanium black

Capacity: 1.0 L  
 Power: 750 W, 220–240 V~, 50/60 Hz  
 Dimensions: 185 × 185 mm  
 Safety: UK STRIX, boil-dry, auto off  
 Design: Cool-touch, stainless interior  
 Use: Push-lid, 360° base, concealed element

CB00263E



### Talía 0.6 - brushed steel

Capacity: 0.6 L  
 Power: 750 W, 220–240 V~, 50/60 Hz  
 Dimensions: 185 × 185 mm  
 Safety: UK STRIX, boil-dry, auto off  
 Design: Cool-touch, stainless interior  
 Use: Push-lid, 360° base, concealed element

CB00261E



### Talía 0.6 - titanium black

Capacity: 0.6 L  
 Power: 750 W, 220–240 V~, 50/60 Hz  
 Dimensions: 185 × 185 mm  
 Safety: UK STRIX, boil-dry, auto off  
 Design: Cool-touch, stainless interior  
 Use: Push-lid, 360° base, concealed element

CB00260E

## Tea and Coffee Making Facilities



lara - black

Capacity: 1.0L  
 Power: 750W, 220-240V~, 50/60Hz  
 Dimensions: 205 x 190 mm  
 Safety: UK STRIX controller,  
 boil-dry protection, auto shut-off  
 Design: Cool-touch body, stainless  
 steel interior, push-button lid,  
 360° base

CB00264E



lara - white

Capacity: 1.0L  
 Power: 750W, 220-240V~, 50/60Hz  
 Dimensions: 205 x 190 mm  
 Safety: UK STRIX controller,  
 boil-dry protection, auto shut-off  
 Design: Cool-touch body, stainless  
 steel interior, push-button lid,  
 360° base

CB00265E



K2 - brushed steel

Capacity: 1.0L  
 Power: 1200W, 220-240V~, 50Hz  
 Dimensions: 190 x 210 mm  
 Safety: Strix controller, boil-dry  
 protection, auto cut-off  
 Design: 360° cordless base,  
 hinged lid, illuminated power  
 indicator  
 Features: Concealed heating  
 element, removable filter

CB00289E



K3 - black

Capacity: 1.0L  
 Power: 900W, 220-240V~, 50Hz  
 Dimensions: 180 x 210 mm  
 Base: 360° cordless base  
 Controller: STRIX controller  
 Safety: Boil-dry protection, auto  
 cut-off  
 Design: Illuminated power  
 indicator, hinged lid, concealed  
 element, removable filter

CB00280E



K1 - white

Capacity: 1.0L  
 Power: 900W, 220-240V~, 50Hz  
 Dimensions: 180 x 210 mm  
 Base: 360° cordless base  
 Controller: STRIX controller  
 Safety: Boil-dry protection, auto  
 cut-off  
 Design: Illuminated power  
 indicator, hinged lid, concealed  
 element, removable filter

CB00285E

## Tea and Coffee Making Facilities



### Grande C-Box - black

Designed to bring order and polish to in-room coffee setups, the Grande C-Box provides a dedicated surface for machines and kettles, with a tidy drawer that keeps pods and condiments neatly separated. Its PU-leather finish and practical layout make it a smart, durable upgrade for any guestroom refreshment area.

Dimensions: 300 × 350 × 100 mm

Material: Wood with premium PU leather

Drawer: Pull-out drawer with removable pod separator

Features: Water-resistant, easy to clean

Usage: Suitable for coffee machines, kettles, cups, and condiments

CB03205E



### Grande C-Box - stone

Combining a stone-textured PU leather finish with a contrasting dark-wood top, this Grande C-Box adds a modern, design-forward touch to guestroom refreshment areas. It provides a stable surface for coffee machines and kettles, while the pull-out drawer keeps pods and condiments neatly organised and easy for guests to access.

Dimensions: 300 × 350 × 100 mm

Material: Stone PU Leather finish with dark wood top

Drawer: Pull-out drawer with removable pod separator

Features: Water-resistant, easy to clean

Usage: Suitable for coffee machines, kettles, cups, and condiments

CB03206E



### C-Box - black fabric / wood

A compact, design-led refreshment box that pairs dark grey fabric with a black wood top for a modern, hotel-ready look. The C-Box keeps tea, coffee, and snacks neatly organised with its pull-out drawer, while the integrated riser helps manage cables and maintain a tidy setup. Durable, water-resistant, and thoughtfully laid out, it's a smart addition to contemporary guest room

Dimensions: 265 × 190 × 85 mm

Material/Finish: Wooden body with dark grey fabric finish, black wooden top

Storage: Pull-out drawer with compartment dividers; notched riser for cables

Stability: 4 stable feet

Features: Water-resistant, compact modern design

CB03191E

## Tea and Coffee Making Facilities



C-Box

Colour: Black  
Finish: Pine with black laquer  
265 x 190 x 84 mm

CB03190E



Coffee Pod Box (8 pods)

Colour: Black  
Finish: PU Leather  
182 x 182 x 65 mm

CB03201E



Grande C-Box - wood top

Colour: Warm Grey  
Finish: PU Fabric  
300 x 350 x 75 mm

CB03207E



Grande Welcome Tray

Colour: Black  
Finish: PU Leather  
400 x 280 x 50 mm

CB03210E



Grande Sachet Holder

Colour: Black  
Finish: PU Leather  
140 x 160 x 95 mm

CB03211E

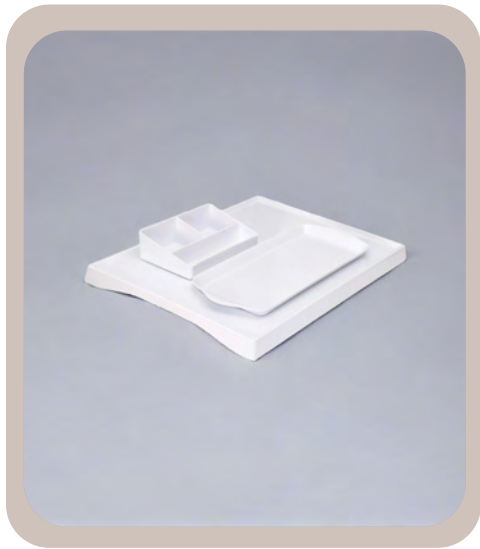


Gallery Tray - wood inlay

Colour: Warm Grey  
Finish: PU Fabric  
330 x 330 x 50 mm

CB03022E

## Tea and Coffee Making Facilities



### Regency Trays - black

Made from durable Melamine

CB01440E Large 398 x 300 x 26 mm

CB01445E Lift off 317 x 129 x 20 mm

CB01450E Sachet 155 x 100 x 45 mm



### Viscount Trays - black

Made from Impact-resistant Polycarbonate

CB01225E Large 420 x 290 mm

CB01200E Small 250 x 150 mm

CB01250E Sachet 120 x 75 mm

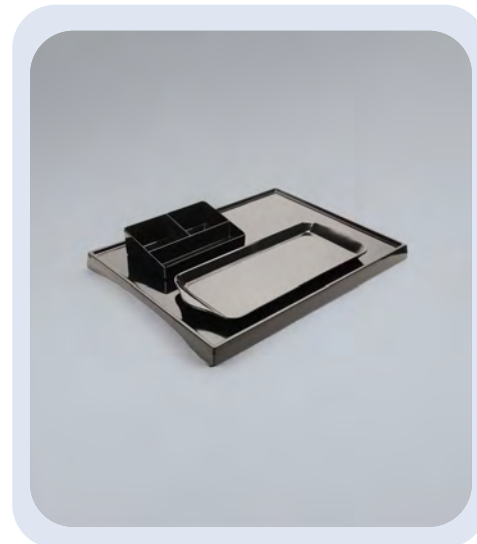
### Regency Trays - white

Made from durable Melamine

CB01460E Large 398 x 300 x 26 mm

CB01465E Lift off 317 x 129 x 20 mm

CB01470E Sachet 155 x 100 x 45 mm



### Viscount Trays - white

Made from Impact-resistant Polycarbonate

CB01325E Large 420 x 290 mm

CB01300E Small 250 x 150 mm

CB01350E Sachet 120 x 75 mm



## Bamboo

Crafted from sustainably sourced bamboo, this collection delivers a modern, eco-conscious upgrade to guestroom organisation. With a smooth, refined finish and excellent durability, it blends natural aesthetics with the practical demands of busy hospitality spaces.



### Natural Tray

- 400 x 280 x 48 mm
- Weight: 0.80 Kg
- Colour: Natural Bamboo Brown
- Food Grade Bamboo
- Eco-Friendly

CB02900E



### Dark Wood Tray

- 1400 x 280 x 48 mm
- Weight: 0.80 Kg
- Colour: Dark Brown
- Food Grade Bamboo
- Eco-Friendly

CB02905E



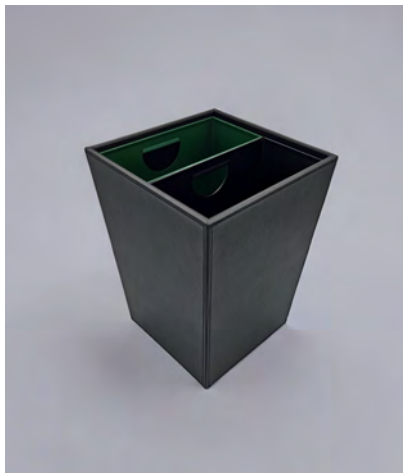
### Amenities Tray

- 180 x 100 x 20 mm
- Weight: 0.15 Kg
- Colour: Natural Bamboo
- Eco-Friendly Lacquer Finish
- Present Toiletries Neatly

CB02895E

## Bins - recycling range

Designed to make in-room recycling feel simple and intuitive, the Decotel Recycling Range combines clear waste-sorting functionality with finishes that blend seamlessly into modern guestrooms. Available in two- or three-divider formats and offered in Steel or PU leather, each piece supports sustainable guest behaviour without disrupting the room's aesthetic—keeping separation tidy, discreet, and naturally integrated into the space.



Recycling Bin  
Square - 2 divider

Colour: Black  
Finish: PU Leather  
185/234 x 185/234 x 313 mm

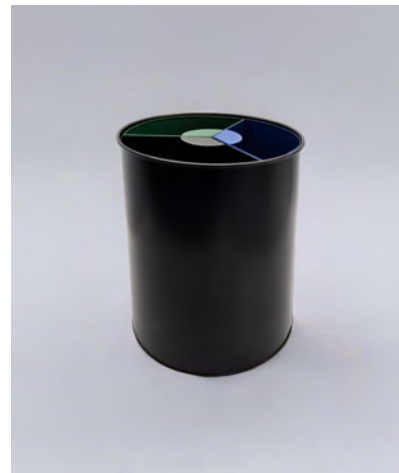
CC00349E



Recycling Bin  
Square - 2 divider

Colour: Stone  
Finish: PU Leather  
185/234 x 185/234 x 313 mm

CC00348E



Recycling Bin  
Round - 3 divider

Colour: Black  
Finish: Steel  
300 x 255Ø mm

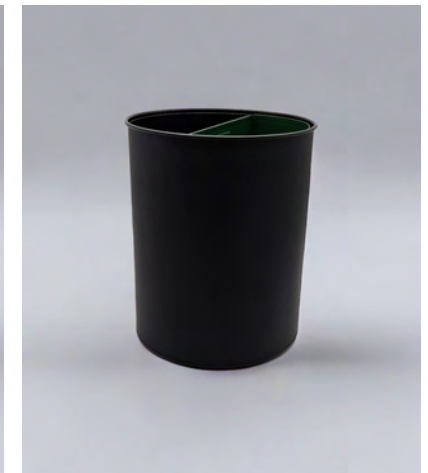
CC00333E



Recycling Bin  
Round - 2 divider

Colour: Black  
Finish: PU Leather  
300 x 255Ø mm

CC00351E



Recycling Bin  
Round - 2 divider

Colour: Black  
Finish: Steel  
300 x 255Ø mm

CC00354E

## Bins - executive range

The Executive Bin Range delivers a quietly sophisticated waste-management solution for premium guestrooms. Crafted from durable materials and compatible with tailored inserts and labels, these bins adapt easily to varied requirements while maintaining a clean, coordinated appearance. The result is an elegant, unobtrusive addition that complements high-quality interiors and reinforces a polished guest experience.



Executive Bin -  
Black w/ silver

Colour: Black with Silver Steel Bezel  
Finish: Steel  
265 x 255Ø mm

CC00345E



Executive Bin -  
Black w/ black

Colour: Black with Black Steel Bezel  
Finish: Steel  
265 x 255Ø mm

CC00335E



Executive Bin -  
Stainless Steel

Colour: Brushed S/Steel with Steel Bezel  
Finish: Steel  
265 x 255Ø mm

CC00340E



Ubineco Recycling  
Insert

Fire-retardant, easy-clean, recyclable ABS  
Fits Decotel Executive Bins & similar bins  
UK-made and Green Tourism endorsed

CC00393FRE



Recycle Labels

5 Recycle symbols  
10 Labels per A4 sheet  
97 x 51 mm (each label)

CC00398E



3 Divider Bin Labels

90 mm laminated vinyl labels  
For Decotel 3-Divider bin  
Can be customised to your needs

CC00333E-S



Essentials that enhance  
the everyday.

# Luggage

## Black Steel

530 x 400 x 600 mm  
 Weight: 2.65 Kg  
 Finish: Black Steel  
 Stylish PU Leather Straps



CJ00145E

## Mirror Steel

670 x 425 x 495 mm  
 Weight: 2.7Kg  
 Finish: Mirror Steel  
 Chrome  
 Strong Straps

CJ00208E



## Chrome

720 x 475 x 685 mm  
 Weight: 2.35 Kg  
 Finish: Chrome Steel  
 Strong Fabric Straps

CJ00202E



## Dark Wood

485 x 500 x 635 mm  
 Weight: 2.45 Kg  
 Finish: Dark Wood  
 Strong Fabric Straps

CJ00150E



## Light Wood

670 x 425 x 495 mm  
 Weight: 2.7 kg  
 Finish: Light Wood  
 Strong Fabric Straps

CJ00151E



## Hangers

Crafted from FSC-certified, sustainably sourced maple, the Decotel Hanger Collection offers a high-quality, environmentally responsible solution for the guest bedroom. With a refined finish suited to both public and private hotel spaces, the range includes hooked and security hangers, ribbed and round trouser bars, skirt clips, and luxury satin padded options. Designed for durability, consistency, and a premium guest experience, each hanger provides reliable garment support with a polished, professional appearance.



Light Wood Hooked Hanger  
Round Trouser Bar

FSC-certified maple wood construction  
Silver hook with round trouser bar  
450 mm wide with notched arms

CG00100E



Light Wood Security Hanger  
Ribbed Trouser Bar

FSC-certified maple wood construction  
Silver security pin with non-slip trouser bar  
450 mm wide with notched arms

CG00120E



Dark Wood Hooked Hanger  
Ribbed Trouser Bar

FSC-certified mahogany-finished maple  
Silver hook with non-slip trouser bar  
450 mm wide with notched arms

CG00170E



Light Wood Security Hanger  
Round Trouser Bar

FSC-certified maple wood construction  
Silver security pin with round trouser bar  
450 mm wide with notched arms

CG00110E



Light Wood Security Skirt  
Hanger with Clips

FSC-certified maple wood construction  
Silver security pin with protective clips  
450 mm wide with notched arms

CG00125E



Dark Wood Security Hanger  
Ribbed Trouser Bar

FSC-certified mahogany-finished maple  
Security pin with non-slip bar  
450 mm wide with notched arms

CG00175E



Light Wood Hooked Hanger  
Ribbed Trouser Bar

FSC-certified maple wood construction  
Silver hook with non-slip trouser bar  
450 mm wide with notched arms

CG00115E



Light Wood Hooked Skirt  
Hanger with Clips

FSC-certified maple wood construction  
Silver hook with skirt clips  
450 mm wide with notched arms

CG00130E

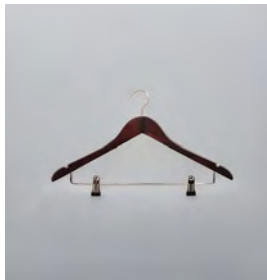


Dark Wood Security Skirt  
Hanger with Clips

FSC-certified mahogany-finished maple  
Security pin with skirt clips  
450 mm wide with notched arms

CG00180E

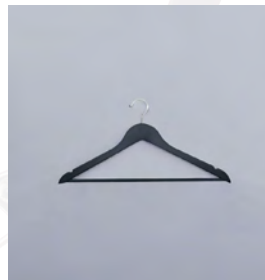
## Hangers



Dark Wood Hooked Skirt Hanger with Clips

FSC-certified mahogany-finished maple  
Silver hook with skirt clips  
450 mm wide with notched arms

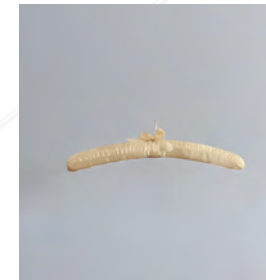
CG00185E



Grey Wood Hooked Hanger Ribbed Bar

FSC-certified grey-finished wood  
Ribbed trouser bar with silver hook  
450 mm wide with notched arms

CG00205E



Cream Satin Security Hanger

Cream satin padding for delicate items  
Hand-finished bow with security pin  
360 mm wide

CG00140E



Black Wood Hooked Hanger Ribbed Bar

FSC-certified black-finished wood  
Ribbed trouser bar with silver hook  
450 mm wide with notched arms

CG00191E



Black Satin Hooked Hanger

Black satin padding for delicate garments  
Hand-finished bow with silver hook  
360 mm wide

CG00190E



Metal Hanger Ring Attachment

Pack of 100 with silver finish  
Pre-installed to prevent hanger removal  
For Decotel Security Pin Hangers

CG00160E



Black Wood Hooked Hanger with Clips

FSC-certified black-finished wood  
Strong garment clips with silver hook  
450 mm wide with notched arms

CG00192E

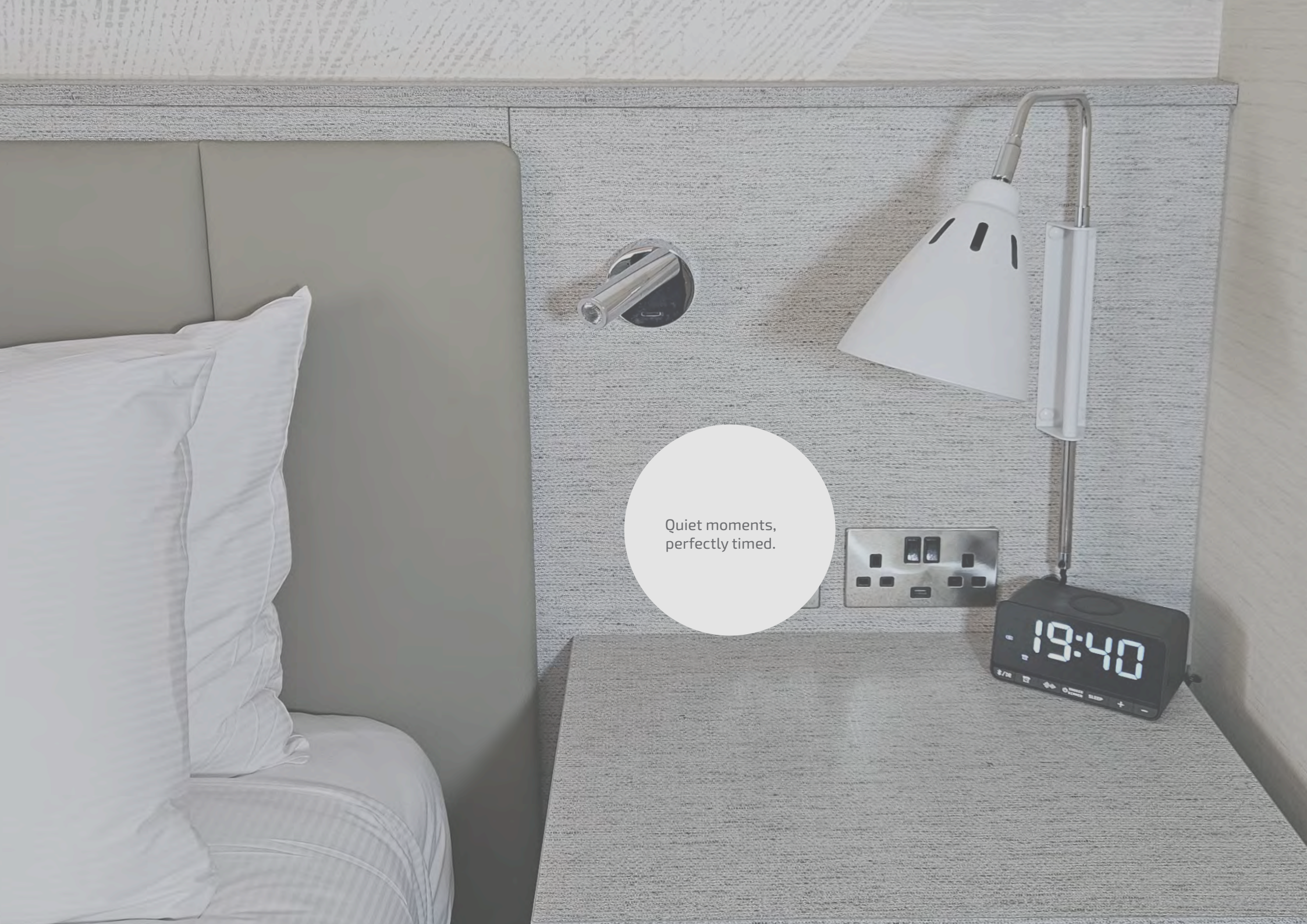


Cream Satin Hooked Hanger

Cream satin padding for delicate garments  
Hand-finished bow with silver hook  
360 mm wide

CG00135E

Tailored options  
sizing, colours, and branding  
available on request.



Quiet moments,  
perfectly timed.

## Alarm Clocks

The Decotel Alarm Clock Range brings modern convenience to the bedside, offering smart, guest-friendly features within compact, contemporary designs. Each model blends clear displays, simple controls, and integrated charging to support a seamless stay, enhancing comfort without overwhelming the room. Thoughtful, intuitive, and built for hotel life, these clocks give guests the tools they need to rest well, wake easily, and stay connected.

### Estrella

A smart bedside clock with charging and audio.

- Wireless + USB/Type-C charging
- Dimmable LED display
- Bluetooth + white noise

CF00140E



### Lua

A feature-rich clock with fast charging and connectivity.

- 15W wireless + USB/dual Type-C
- Dimmable LCD with dual alarms
- Bluetooth speaker + FM radio

CF00141E



## Safes

The Decotel Safe Range offers reliable, easy-to-use security for every room type, giving guests a simple way to protect their valuables while travelling. With models tailored to different spaces and needs, the range integrates smoothly into modern interiors and supports a calm, confident guest experience.

### Eaton

#### Biometric Hotel Safe

A compact, hotel-ready biometric safe that gives guests quick, reassuring access to secure storage with a fast fingerprint scanner and clear digital controls.

- Biometric + PIN access system (32 prints; 3–8 digit PIN).
- Steel construction with 4 mm door and dual 20 mm bolts.
- External size: 250 × 350 × 250 mm
- Optional Wi-Fi module plus mechanical override key.

CX00020E



## Safes



## Esher – compact

PIN access (3–8 digits) with clear LCD/LED indicators.  
4 mm steel door with dual 20 mm locking bolts.  
External size: 200 × 310 × 200 mm  
Mechanical override key plus pre-drilled fixing points.

CX00010E



## Enfield – spacious

PIN access (4–6 digits) with auto-lock.  
4 mm steel door with dual 20 mm motorised bolts.  
External size: 370 × 508 × 200 mm  
200-event audit trail plus mechanical override key.

CX00015E



## Ely – top opening

PIN access (4–6 digits) with tamper lockout.  
Top-opening design for drawer or cabinet installation.  
4 mm steel door with dual 20 mm motorised bolts.  
External size: 350 × 400 × 145 mm with audit trail + override.

CX00025E



Everything in its place,  
perfectly considered.

## Minibars

The Lumi Minibar Range brings quiet, modern convenience to the guestroom, offering a compact cooling solution that integrates naturally into under-counter spaces and contemporary room designs. Whether you choose a clean, discreet solid-door finish or a clear glass door that presents refreshments attractively, each unit delivers a calm, guest-friendly experience supported by silent operation and soft interior lighting. Thoughtful in form and effortless in use, Lumi minibars help elevate in-room service while keeping the overall space feeling organised, welcoming, and comfortably refined.



LUMI 30L - solid door

Capacity: 30 L  
 Door: Solid with in-door bottle storage & LED Light  
 Cooling: Silent thermoelectric (Peltier)  
 Temp Range: 8°–15 °C  
 Energy Use: 0.21 kWh/24 hr (Level E)  
 Power: 220–240 V · 50/60 Hz  
 Size / Weight: 420 × 385 × 470 mm · 10.5 kg

CB03604E



LUMI 30L - glass door

Capacity: 30 L  
 Door: Glass with LED illumination  
 Cooling: Silent thermoelectric (Peltier)  
 Temp Range: 8°–15 °C  
 Energy Use: 0.177 kWh/24 hr (Level E)  
 Power: 220–240 V · 50/60 Hz  
 Size / Weight: 420 × 385 × 470 mm · 12.8 kg

CB03603E



LUMI 40L - solid door

Capacity: 40 L  
 Door: Solid with in-door bottle storage & LED light  
 Cooling: Silent thermoelectric (Peltier)  
 Temp Range: 8°–15 °C  
 Energy Use: 0.263 kWh/24 hr (Level F)  
 Power: 220–240 V · 50/60 Hz  
 Size / Weight: 425 × 400 × 560 mm · 12.5 kg

CB03601E



LUMI 40L - glass door

Capacity: 40 L  
 Door: Glass with LED illumination  
 Cooling: Silent thermoelectric (Peltier)  
 Temp Range: 5°–8 °C  
 Energy Use: 0.164 kWh/24 hr (Level D)  
 Power: 220–240 V · 50/60 Hz  
 Size / Weight: 420 × 420 × 570 mm · 15.5 kg

CB03602E



Designed to soothe,  
day or night.

## Comfort & Cooling Accessories

Decotel's Comfort & Cooling range provides practical refreshment and reliable airflow, helping guests stay comfortable in any room or season.



### 12" Desk Fan

Size: 12-inch  
 Dimensions / Weight: 240 × 340 × 480 mm · 1.8 kg  
 Power: 35 W · 230 V / 50 Hz  
 Speed Settings: 3-speed control  
 Blades: 3 PP blades  
 Grill: Mesh safety grille  
 Cord: 1.5 m (2 × 0.5 mm<sup>2</sup>)

CB00415E



### Steel Ice Bucket & Tongs

Material: Stainless steel  
 Dimensions: 150 × 140 mm (∅)  
 Construction: Double-walled  
 Features: Removable draining filter  
 Lid: Integrated compartment for tongs  
 Accessories: Includes stainless steel tongs

CJ00635E



### Black Ice Bucket & Tongs

Material: PU leather exterior · Stainless steel interior  
 Dimensions: 180 × 138 mm (∅)  
 Construction: Insulated inner wall  
 Features: Includes matching tongs  
 Design: Sleek black finish  
 Extras: Compact, modern styling

CJ00637E

# Bathroom

Our bathroom collection brings together refined essentials designed to elevate the everyday ritual of guest preparation. From elegantly contoured bins to precision-crafted dispensers and beautifully finished mirrors, each piece blends thoughtful functionality with a serene, contemporary aesthetic. Every item is selected for durability, ease of maintenance, and the timeless design language that defines the Decotel experience—ensuring bathrooms feel polished, harmonious, and effortlessly guest-ready.



## Bathroom New Arrivals

Elevate bathroom spaces with our latest additions designed for quieter, cleaner, and more refined guest experiences. The expanded soft-close bin range brings smooth, noise-free operation and enhanced durability. Our Stone Cube Tissue Box adds a weighted, premium touch that keeps tissues neatly in place, while the new wall-mounted mirror offers a smart, space-saving solution with a crisp, contemporary profile. Thoughtful, practical upgrades that make every bathroom feel effortlessly elevated.



### Soft Close Pedal Bins

A clean, modern solution for hotel bathrooms, our matte-black pedal bins offer smooth hands-free use with a quiet soft-close lid. Durable, easy to maintain, and designed with removable liners for quick house-keeping, the range comes in 3L and 5L sizes for both compact and standard spaces.



### Stone Cube Tissue Box

A compact, premium solution for tidy guest spaces, the Stone Cube Tissue Box features a PU-leather finish with a secure magnetic base. Its quick-open design and wipe-clean surface make refilling and upkeep effortless, offering a durable, water-resistant accessory for coordinated room and bathroom presentation.



### Wall Mounted Mirror

A polished-chrome essential offering standard and 3× magnification for clear, effortless grooming. With a smooth swivel and a foldable arm that keeps bathrooms tidy when retracted, it's durable, wipe-clean, and subtly luxurious for any guest space.

## Bathroom Bins

Elevate bathroom spaces with our latest additions designed for quieter, cleaner, and more refined guest experiences. The expanded soft-close bin range brings smooth, noise-free operation and enhanced durability. Our Stone Cube Tissue Box adds a weighted, premium touch that keeps tissues neatly in place, while the new wall-mounted mirror offers a smart, space-saving solution with a crisp, contemporary profile. Thoughtful, practical upgrades that make every bathroom feel effortlessly elevated.



Pedal Bin -  
5 Litre

Capacity: 5 L  
Matte Black Coated Steel  
Dimensions: 274 × 224 Ø mm  
Features: Carry Handle,  
Hands-Free Pedal /  
Soft-Close

CC00353E



Pedal Bin -  
3 Litre

Capacity: 3 L  
Matte Black Coated Steel  
Dimensions: 256 × 166 Ø mm  
Features: Carry Handle,  
Hands-Free Pedal /  
Soft-Close

CC00373E



Pedal Bin -  
5 Litre

Capacity: 5 L  
Chrome Coated Steel  
Dimensions: 274 × 224 Ø mm  
Features: Carry Handle,  
Hands-Free Pedal /  
Soft-Close

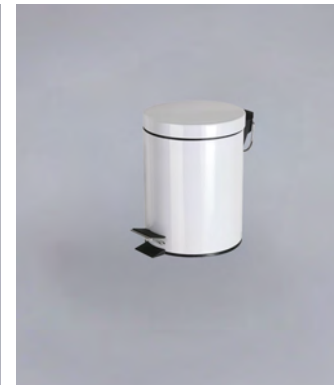
CC00371E



Pedal Bin -  
3 Litre

Capacity: 3 L  
Chrome Coated Steel  
Dimensions: 256 × 166 Ø mm  
Features: Carry Handle,  
Hands-Free Pedal /  
Soft-Close

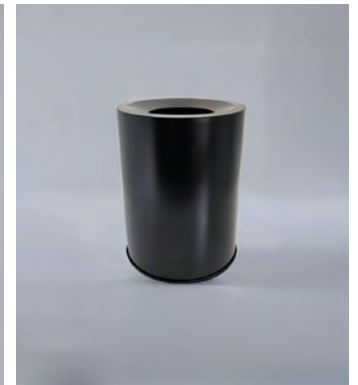
CC00374E



Pedal Bin -  
3 Litre

Capacity: 3 L  
White Coated Steel  
Dimensions: 256 × 166 Ø mm  
Features: Carry Handle,  
Hands-Free Pedal /  
Soft-Close


CC00372E



Open Top Bin

Capacity: 12.5 L  
Black Coated Steel  
Dimensions: 330 × 229 Ø mm  
(outer) / 220 Ø mm (inner)  
Features: Freestanding, Durable  
Build, Integrated Safety Guard

CC00331E

A photograph of a bathroom vanity area. The vanity is a white countertop with a speckled grey stone backsplash. On the counter, there are several black fixtures: a large rectangular tissue dispenser with white tissues, a smaller square soap dispenser, and a cylindrical trash can with a lid and a foot pedal. A dark blue circle with white text is overlaid on the image.

A considered touch in every bathroom.

## Bathroom Dispensers



### Chrome

Toughened ABS with a chrome finish

CU02050E Cube 130 x 130 x 130 mm

CU00302E Rectangular 256 x 140 x 60 mm

CU00304E Hygiene 137 x 97 x 25 mm

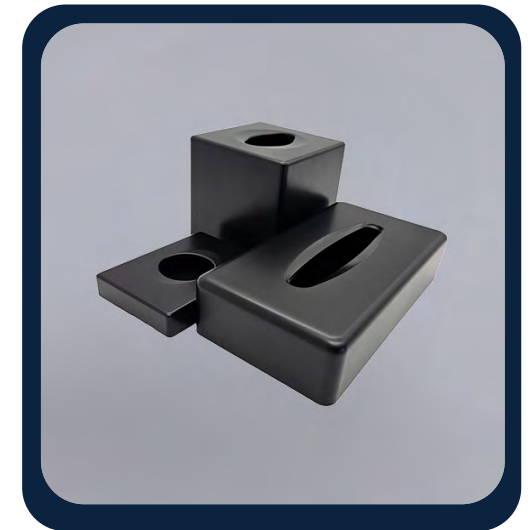
### White

White-finished ABS for a clean, durable casing

CU00308E Cube 130 x 130 x 130 mm

CU00303E Rectangular 256 x 140 x 60 mm

CU00305E Hygiene 137 x 97 x 25 mm



### Matte Black

Finished in durable matte black ABS.

CU00301E Cube 135 x 135 x 130 mm

CU00309E Rectangular 254 x 137 x 60 mm

CU00306E Hygiene 136 x 96 x 25 mm

Bathroom Dispensers

Mirrors



PU Leather Cube  
Black

130 × 130 × 132 mm  
Material: PU Leather  
Finish: Black, Water-Resistant  
Features: Soft-Lined, Magnetic Base

CU00311E

PU Leather Cube  
Stone



130 × 130 × 132 mm  
Material: PU Leather  
Finish: Stone, Soft-Lined  
Features: Magnetic Base, Wipe-Clean Surface

CU00312E



PU Leather Flat  
Black

240 × 120 × 70 mm  
Material: PU Leather  
Finish: Black, Water-Resistant  
Features: Soft-Lined, Magnetic Base

CU00310E



Wall Mounted  
Mirror

- 200 mm, 2 x sided (1x / 3x mag)
- Polished chrome finish
- 360° swivel, foldable arm
- Extends 335 mm
- Wall-mounted, space-saving

CD05042E

## Bathroom Mats & Curtains

### Large Bath Mat

750 × 350 mm — pack of 10  
 Anti-fungal rubber  
 Non-slip textured surface  
 Perforated for drainage  
 Machine washable at 40°C



CI00416E

### Compact Bath Mat

560 × 345 mm —  
 pack of 10.  
 Anti-fungal rubber,  
 non-slip, perforated  
 for drainage,  
 machine-washable  
 (40°C).

CI00415E



### Silicone Bath Mat

580 × 360 mm —  
 pack of 10.  
 Opaque silicone,  
 anti-fungal, anti-  
 odour, non-slip and  
 perforated.  
 machine-washable  
 (40°C).

CI00418E



### Shower Curtain - white

180 × 180 cm.  
 White polyester,  
 water- and mold-  
 resistant with  
 rust-free eyelets  
 and weighted hem,  
 machine-washable.

CI00460E



### Shower Curtain - satin

180 × 180 cm.  
 Satin stripe  
 polyester, water-  
 and mold-resistant  
 with rust-free  
 eyelets and  
 weighted hem,  
 machine-washable.

CI00468E



## Toilet Brushes

### Stainless Steel

275 H × 100 Ø mm  
Brushed Stainless Steel  
Durable, Easy to Clean  
Surface-Protected Finish, Wall-Mountable  
Holder included



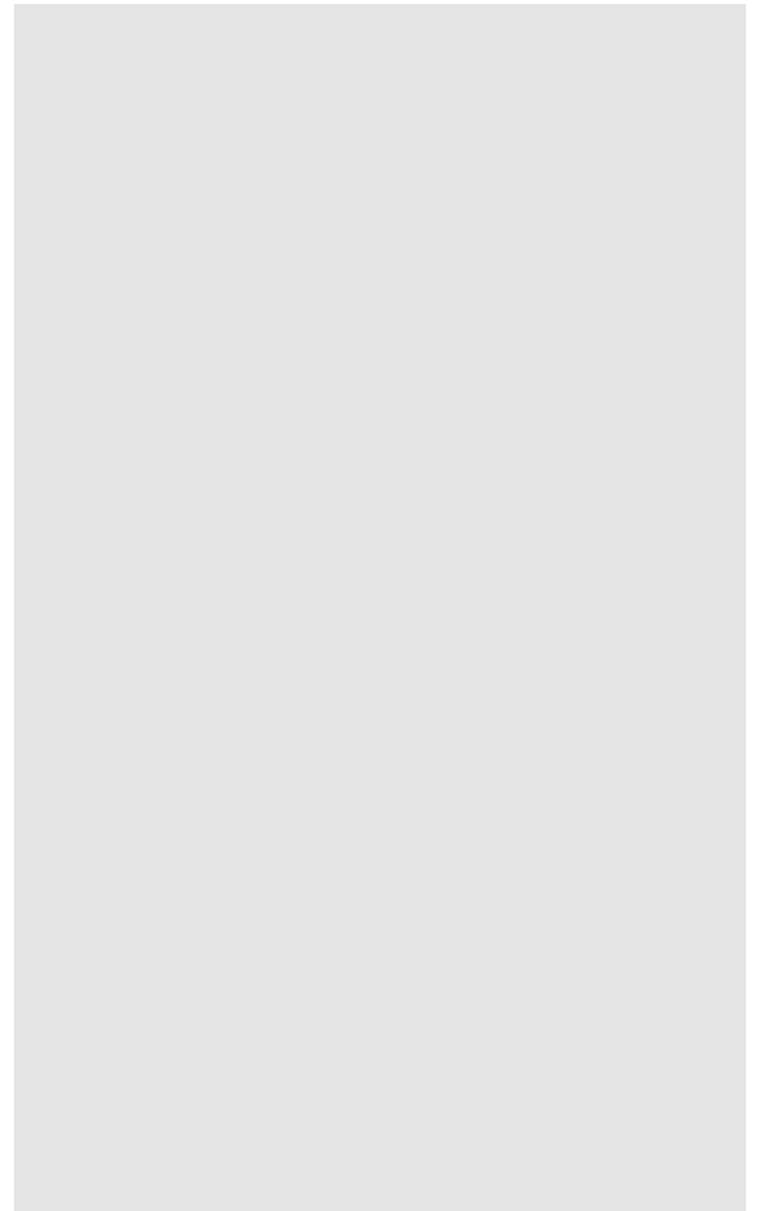
CC00925E

### Matte Black

380 H × 120 Ø mm  
Matte Black Steel  
Black Nylon Brush (Stem & Bristles)  
Durable, Non-Slip Base, Wall-Mountable  
Holder included



CC00923E





Simple details,  
beautifully executed.

# Swithland Spa

Swithland Spa is a Decotel brand delivering a curated range of bathroom fixtures for modern hospitality. With tiered collections—dependable Essentials, refined Premium, and indulgent Luxury—the range offers solutions suited to every level of guest experience.

From towel rails and hooks to mirrors, dispensers, and accessories, each piece blends quality, style, and practical performance. With both standard and bespoke options available, Swithland Spa helps create bathrooms that feel cohesive and considered, supported by the collaborative approach we bring to every project.



## Essentials

Everyday essentials, thoughtfully crafted.

From towel bars and paper holders to robe hooks and soap dishes, the Essentials range delivers dependable, design-led foundations for modern hotel bathrooms.



## Premium

Elevated design for contemporary spaces.

Featuring refined chrome double towel racks, glass holders and extended soap shelves, the Premium collection introduces a higher level of detail, finish, and functionality.



## Luxury

Statement pieces for distinguished interiors.

Defined by sophisticated towel rails, slimline double hooks, glass shelves and premium accessories, the Luxury range brings spa-inspired elegance to exceptional guest spaces.

*A refined introduction to the Swithland Spa line. Reach out to learn more about the complete range and customisable possibilities.*

## Essentials



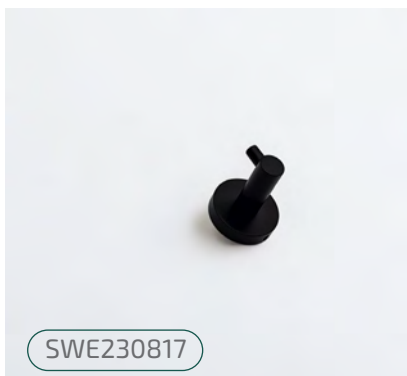
SWE051241

### Toilet Brush Holder - 120

- 120 x 165 x 385 mm
- 304 stainless steel in black or chrome
- Easy to clean and install



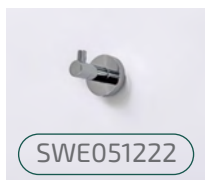
SWE230827



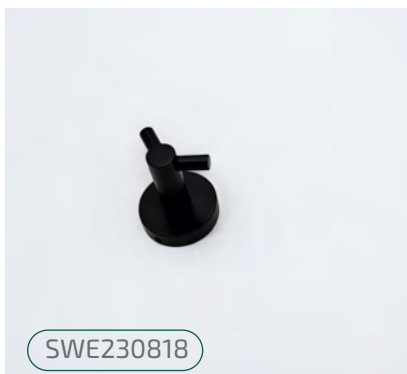
SWE230817

### Hook - 55

- 55 x 50 x 45 mm
- 304 stainless steel in black or chrome
- Wall-mounted design



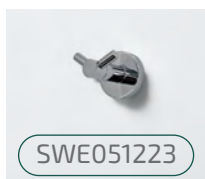
SWE051222



SWE230818

### Double Hook - 60

- 60 x 50 x 45 mm
- 304 stainless steel in black or chrome
- Space-saving double-hook design



SWE051223



SWE230830

### Glass Shelf - 605

- 605 x 130 x 45 mm
- 304 stainless steel in black or chrome
- Wall-mounted design



SWE051246



SWE230813

### Double Towel Rack - 645

- 645 x 210 x 110 mm
- 304 stainless steel in chrome or black
- Dual-bar design



SWE051212

*Premium**Towel Bar - 660*

- 660 x 750 x 20 mm
- 304 stainless steel in chrome
- Streamlined single-bar design

SWP202124

*Soap Dish - 400*

- 400 x 120 x 30 mm
- 304 stainless steel in chrome
- Extended slimline profile

SWE202139

*Glass Holder - 130*

- 130 x 100 x 90 mm
- 304 stainless steel in chrome
- Premium holder supplied with matching glass

SWP202128

*Paper Holder - 140*

- 140 x 75 x 90 mm
- 304 stainless steel in black or chrome
- Sleek open-arm design

SWP060921



SWP202133

*Luxury**Double Hooks - 30*

- 30 x 92 x 50 mm
- Matte brushed steel finish
- Dual curved-arm design for added hanging capacity

SWL020714

*Soap Dish - 103*

- 103 x 119 x 60 mm
- Matte brushed steel finish
- Frosted curved dish for an elegant, modern presentation

SWL020717

*Soap Dispenser - 69*

- 69 x 106 x 171 mm
- Matte brushed steel finish
- Frosted square dispenser bottle included

SWL020718

*Double Glass Holder - 182*

- 182 x 93 x 125 mm
- Matte brushed steel finish
- Wall-mounted for a neat, streamlined presentation

SWL020716

*Toilet Brush Holder - 92*

- 92 x 128 x 380 mm
- Matte brushed steel finish
- Frosted square holder with matching brush included

SWL020719

# Bespoke

Let's bring your vision to life—our team is here whenever you need

Every property has its own personality, and your details should show it. Our bespoke service works with you to create finishes, materials, and designs that match your vision and practical needs. From standout suites to full rollouts, we'll help you shape pieces that feel genuinely yours—beautiful, functional, and thoughtfully made.



## Menu Holder

Crafted to complement your space, our custom menu holders blend considered design with durable materials. Tailored to your size, finish, and branding needs, each piece adds a polished touch to your guest experience.

## Resin Bathroom Range

Our resin bathroom collection—featuring trays, dispensers, and coordinated accessories—is made to order in your chosen colours and textures. Designed for harmony and practicality, each item brings a calm, cohesive feel to your bathrooms.




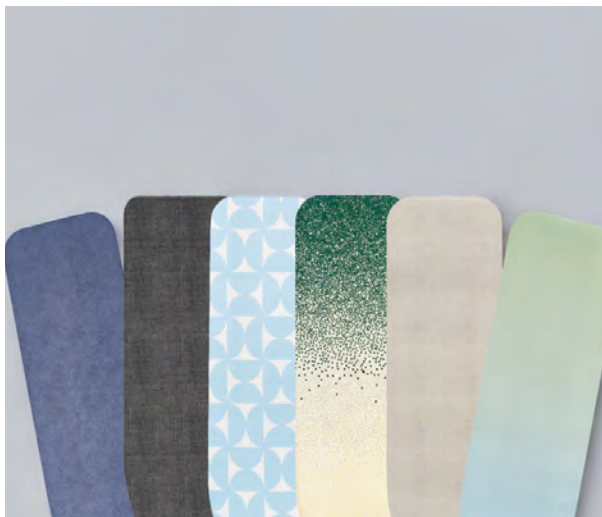
## Laundry Bag

A tailored laundry bag designed to reflect your brand through colour, logo, and thoughtful detailing. Well-crafted, functional, and made to fit seamlessly into your rooms and housekeeping flow.

# Featured Brands

We partner with brands who share our commitment to quality, practicality, and thoughtful design. Together, they help us bring you reliable solutions that support smooth operations and elevate everyday service.

 brabantia



Durable, well-designed essentials made for daily hotel use

- Ironing board covers in multiple sizes and Fairtrade cotton.
- Room bins from the Bo range in various colours.
- Public-area bins built for high-traffic use.

 caddie

Quality since 1928



Robust, well-designed trolleys for daily hotel operations.

- Housekeeping trolleys made for durability and efficiency.
- Laundry carts designed for smooth back-of-house flow.
- Front-office & service solutions that streamline workflows.

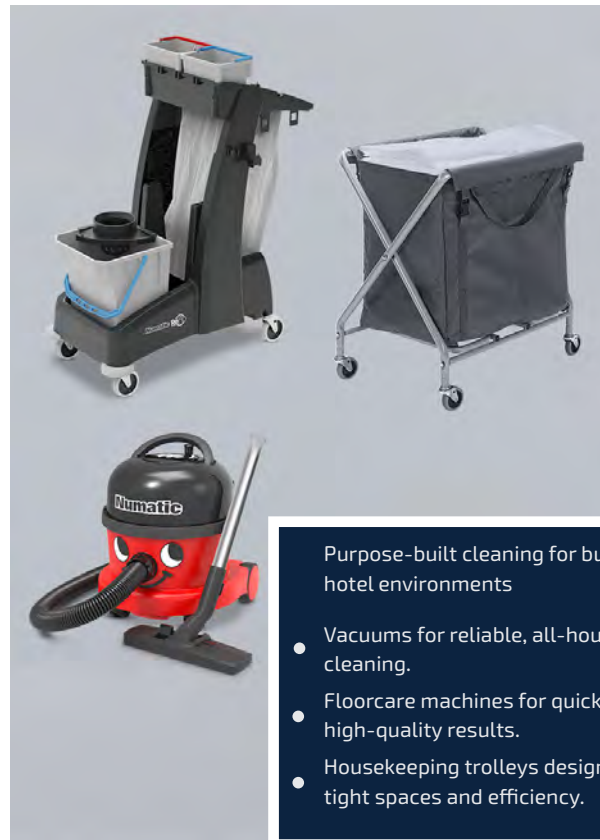
**KÄRCHER**



High-performance cleaning systems trusted by leading hotels.

- Quiet vacuums ideal for guest-area cleaning.
- Scrubber driers for spotless floors and lobbies.
- Carpet & upholstery machines for quick, deep cleaning.

## Numatic



Purpose-built cleaning for busy hotel environments

- Vacuums for reliable, all-hours cleaning.
- Floorcare machines for quick, high-quality results.
- Housekeeping trolleys designed for tight spaces and efficiency.

## smeg PROFESSIONAL



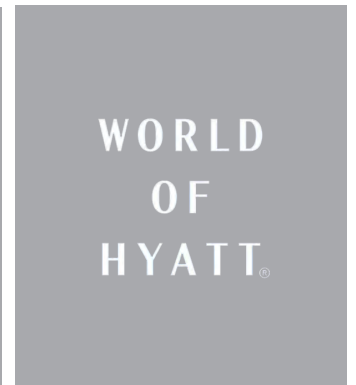
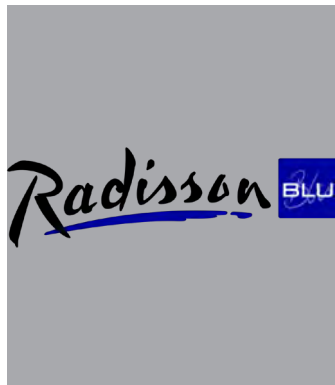
Stylish, Italian-made appliances for modern guest rooms.

- Kettles designed for compact, in-room use.
- Minibars from silent thermo-electric to retro FAB models.
- Fridges offering quiet, efficient performance

# Trusted by

We're proud to be chosen by many of the industry's most respected names — from hotel groups and management companies to interior designers, procurement teams, and boutique independents. These partnerships reflect our shared commitment to quality, reliability, and exceptional guest experiences.

Below is a selection of the hotels, brands, and design partners who trust Decotel across their projects.



*Please note: Product availability may vary by region. Your Decotel representative can advise on the best options for your property.*

*Specifications, materials, and finishes may evolve as we continue to refine our collections. For the most accurate information, or for quotes and samples, our team is here to assist.*

*Product images © Decotel. Supplementary lifestyle imagery remains the property of its respective owners. All rights reserved.*

*Specifications, dimensions, and finishes are provided as a guide and may change over time. For the latest technical information, please speak with your Decotel representative.*



Delivering Excellence  
in Hotels & Hospitality

[www.decotel.com](http://www.decotel.com)

## Contact Us

+44 1509 264 422

[sales@decotel.com](mailto:sales@decotel.com)

Loughborough, UK

+34 96 121 37 43

[sales-eu@decotel.com](mailto:sales-eu@decotel.com)

Valencia, ES